



CENTURY SPIRE: THRILLER IN MANILA

MAKATI, PHILIPPINES

By: Joseph Reaney

Century Spire is one of the Philippines' most exciting new residential developments. The eighth tower in the shimmering glass high-rise development that is "Century City", it is the first building in the Philippines to be designed by the renowned architect Daniel Libeskind, as well as the first in the country to have its interior crafted by Giorgio Armani. *Private Air Luxury Homes* Magazine spoke to Robbie Antonio, the head of the Century Spire project, to get the full story behind this groundbreaking (if rather unconventional) skyscraper.

"For me, deciding to work with Daniel [Libeskind] on this project was easy. I'd seen his other work, like the Jewish Museum in Berlin and the [MGM Mirage] CityCenter in Las Vegas, and I had met the man numerous times. I decided henceforth that he would be a great addition to the team here. He is a stellar architect who is adept at creating sculptural buildings and master plans – and is somebody who can take the lead in large projects, factoring in all the variables. And that made Daniel's studio the natural choice for Century Spire.

What makes Century Spire particularly special is that all the architecture is glass. It is very, very uncommon for residences to have glass on all sides in the Philippines... in the apartments here, you usually see concrete buildings. It is quite awe-inspiring with the amount of glass and the amount of light. Up at the top, the glass tower blooms like a flower, with petals opening; an outstanding work of architecture. In fact, this shouldn't be viewed as just another building, I want people to view it as a sculptural piece, as a work of art in Makati.

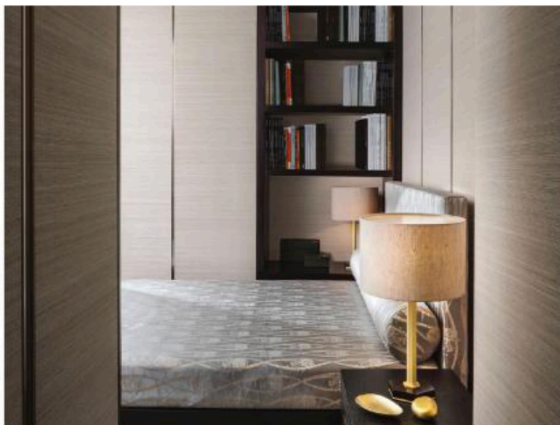
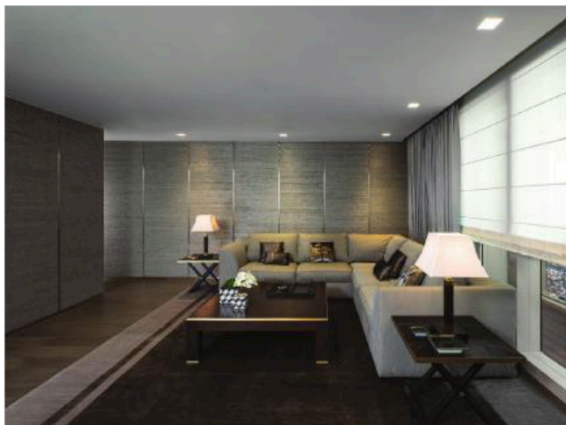
There are 500 residential units in Century Spire, with 35 of the 60 floors in the building given over to them. Units are divided in the suite size apartment, one bedroom, one bedroom premiere, two bedroom, three bedroom, duplex penthouse, and a penthouse at the top. These start at around 35 square meters and go all the way up to multi-floor penthouses of 272 square meters, which will cost \$2.7 million. 70 percent of the apartments are already sold, but many penthouses are still available for those who look for ultimate luxury.



Armani/Casa is responsible for the interior design of all the apartments. We chose them because they are a very stylish and fashionable designer, and because Giorgio Armani's design philosophy of comfort, style and sophistication, and elegant, minimalist design, couples well with the overall architecture of Century Spire to offer residents the perfect combination. The décor emphasizes the rooms' bold geometry, bringing it in line with the exterior. Armani/Casa also designed all the common spaces in the building, from the grand lobby to the spa and swimming pool, for which they use a mix of golden beiges, warm greys and muted greens.

All the amenities in this luxury residential tower are custom-designed by Giorgio Armani, and include what you would typically find within a five-star hotel. So residents can expect to enjoy a grand lobby, a wonderful spa, a swimming pool and fitness center, a business center, a library, a juice bar, and much, much more. We wanted to bring all the activities inside so you do not necessarily have to leave. The model unit for this took about eight months – the longest we have ever done – as they were so particular about every aspect of the property. It's been a lot of love and care. There is also a





concierge service, valet parking and housekeeping.

Residences will only be available to move into in 2018, but before we even opened the showcase we had already sold two-thirds of units. So if you are still interested, you should contact us to book a viewing at the Pacific Star Building in Makati City and reserve your place. Our apartments are not the cheapest – in fact, we have the highest price per square meter anywhere in the country – but they are perfectly designed for those who appreciate amazing architecture, a great location in the center of Makati and beautiful interiors.

The developing market of the Philippines is currently the fastest-growing economy in southeast Asia, with a GDP growth of 7.2 percent back in 2013. And Century Spire is the last of five luxury residential skyscrapers to rise in Century City effectively making it the most desirable address on this premium piece of real estate.” ✈

Penthouses at Century Spire start from \$2.59 million and are currently available for purchase (to move in 2018). You can find out more, and book your viewing, on Century Spire's website: www.centuryspire.com



Daniel Libeskind, Giorgio Armani and Robbie Antonio

WHO IS ROBBIE ANTONIO?

As well as taking the helm for the game-changing Century Spire development, Robbie is also the Managing Director of Century Properties, and has “personally spearheaded all company brand projects in the last five years.” Some of their most notable recent and ongoing residential projects within the Philippines include Azure Urban Resort Residences (with Paris Hilton), Acqua Livingstone, Milano Residences and Trump Tower.